

The commitment of the Port of Barcelona to environment





CONTENTS

1. Main figures of the Port of Barcelona
2. Estimating emissions from port activity
3. Contribution to air quality of the city
4. Action plan to reduce emissions

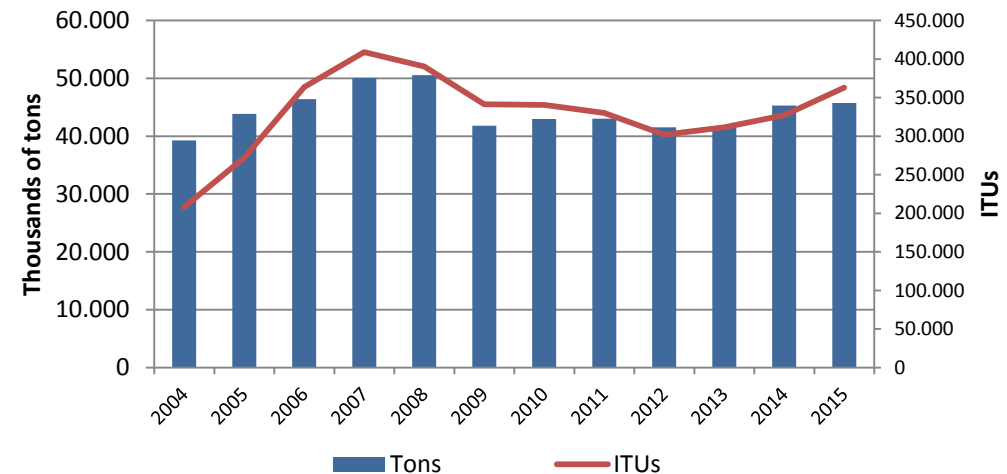


1. Main figures

Traffic 2015

Total traffic	45,7 M Tm
Container	2 M TEU
Vehicles	881.893 Units
Ro-Ro traffic	360.995 ITUs
Passengers	3,7 M Pax

Total traffic in the Port of Barcelona 2004-2015
(Thousands of tons)



Over 30% of cargo is to/from Mediterranean

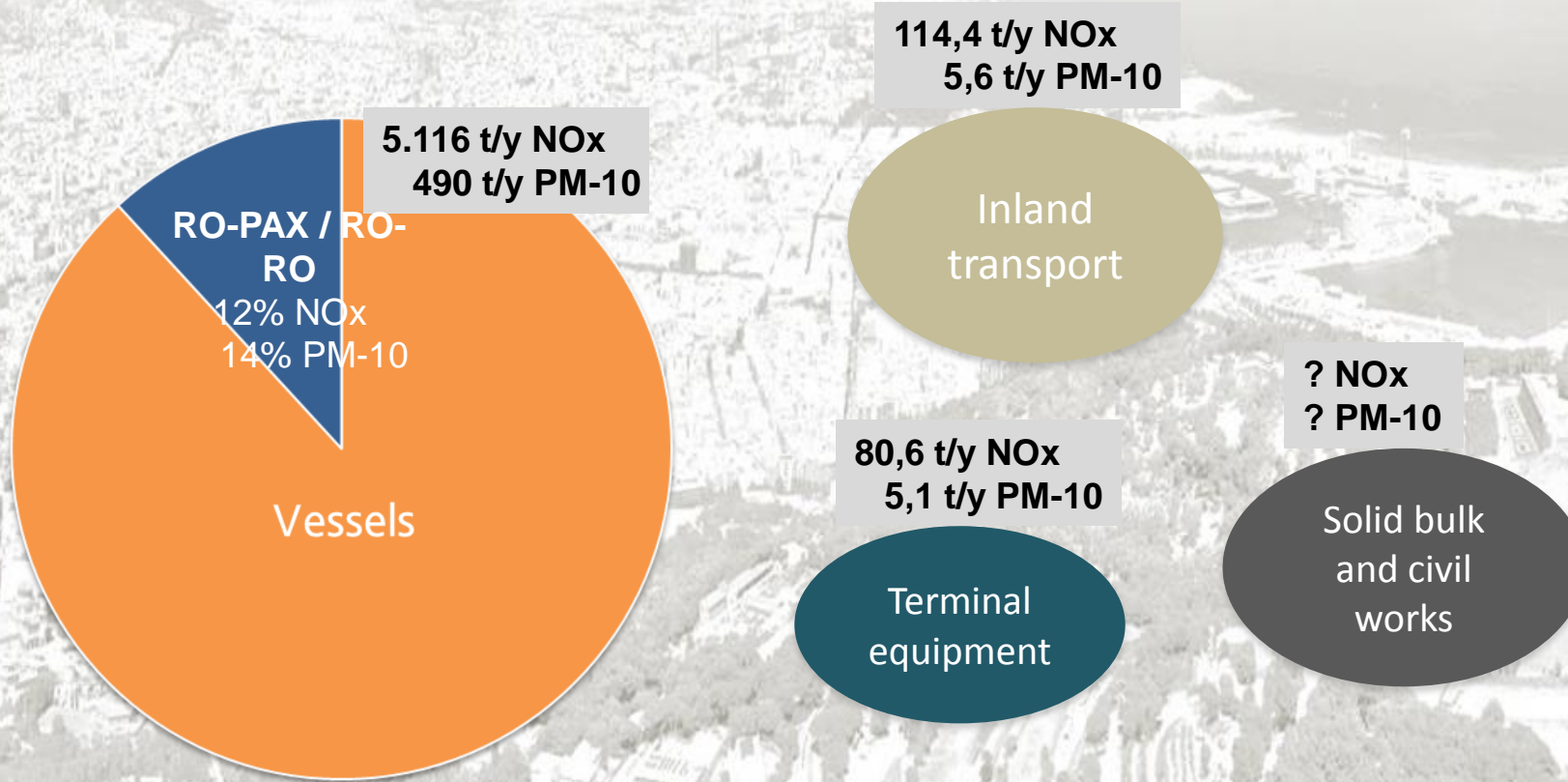
➔ A highly specialised port





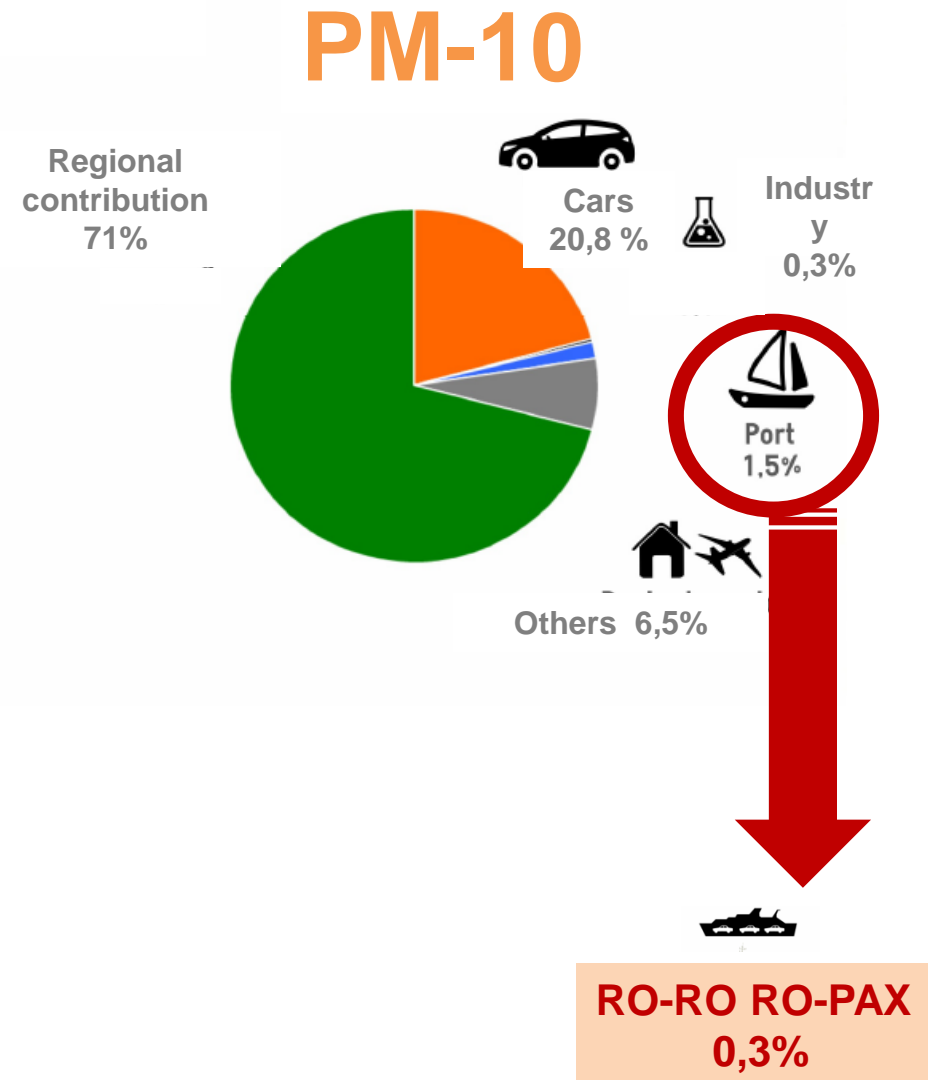
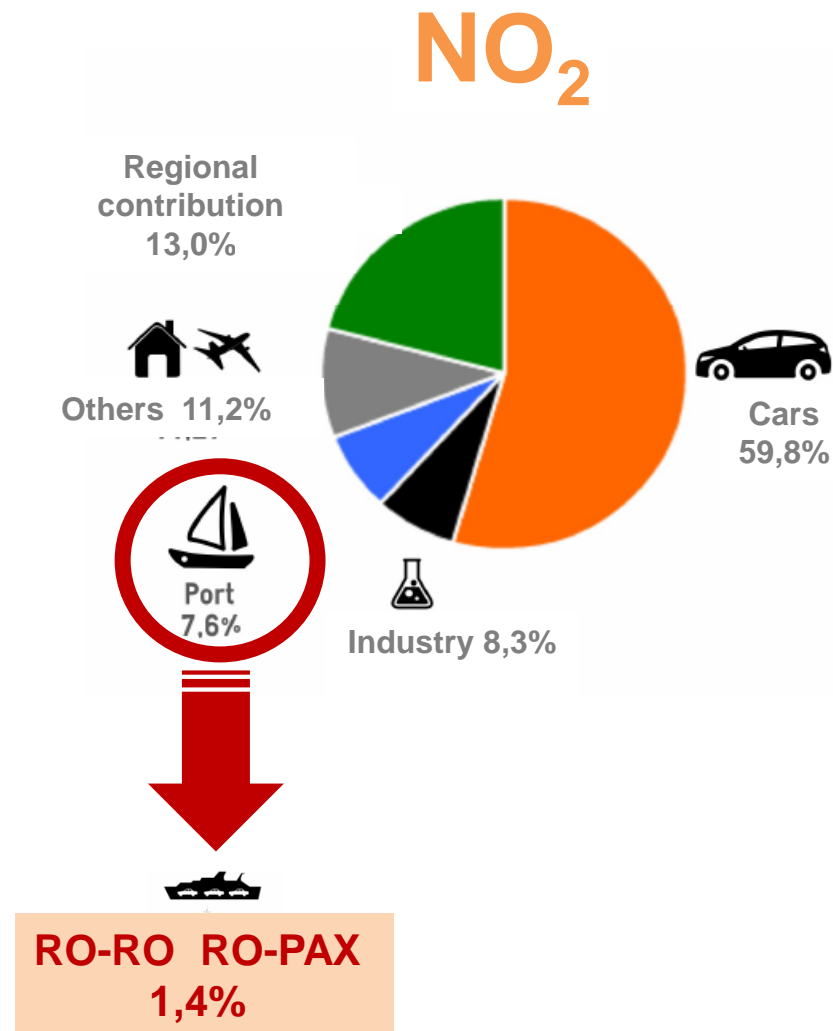
2. Estimating emissions from Port activity

Emissions from Barcelona Port Activity are estimated to be 5.545,8 t/y of NO_x and 505,68 t/y of PM-10.





3. Contribution to air quality of the city





4. Action plan to reduce emissions

**SHIP
EMISSIONS**

**TRAFFIC
EMISSIONS**

**EMISSIONS
OF
TERMINAL
EQUIPMENT**

**RAIL AND
SHORT SEA
SHIPPING
PROMOTION**

**DUST
EMISSIONS**

**NEW
ACCESSES**

**EMISSIONS
DUE TO
CONSTRUCTION**

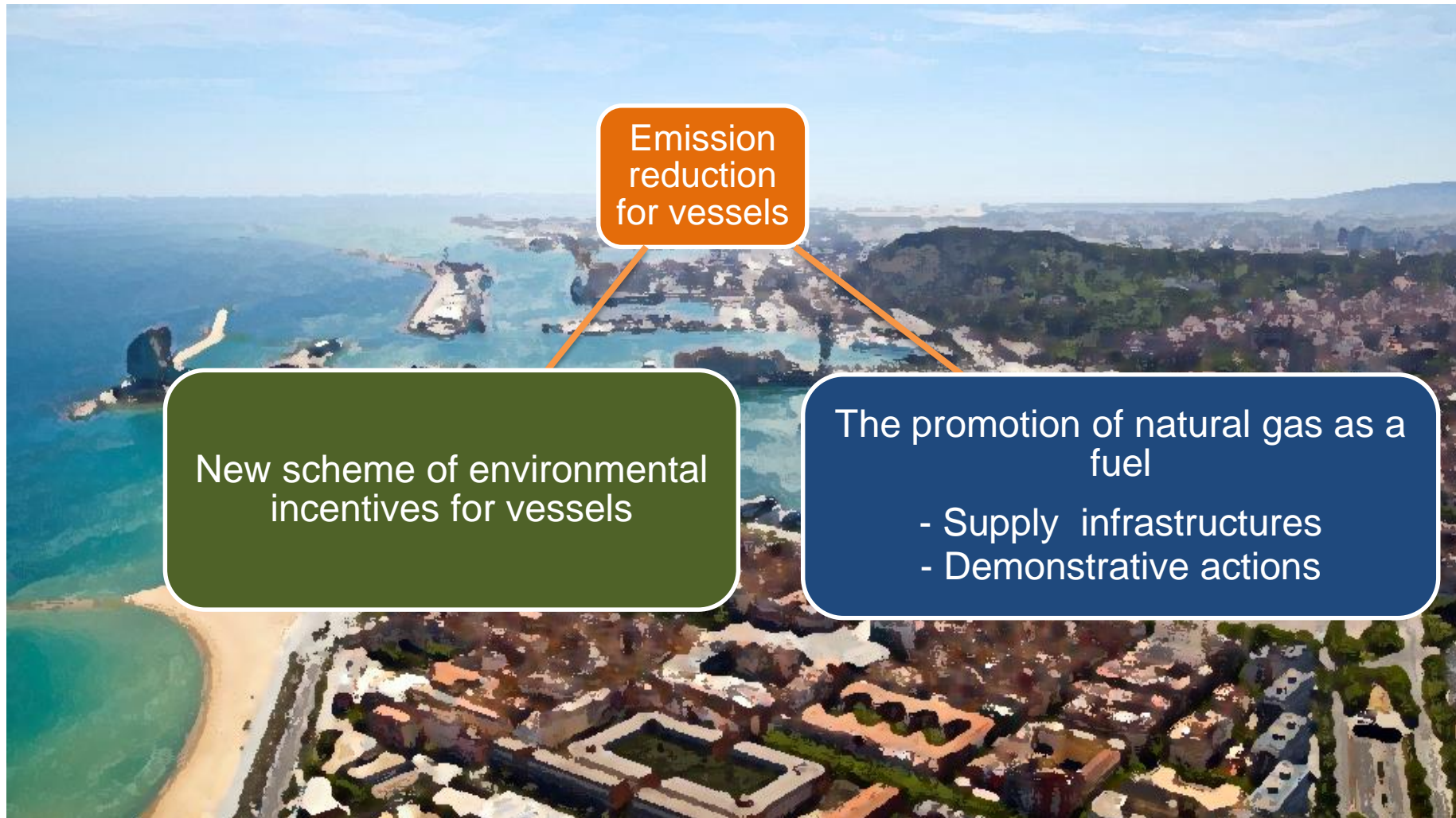
**SUSTAINABLE
MOBILITY**

**AIR QUALITY
MONITORING
NETWORK**



4. Action plan to reduce emissions

Port actions to reduce emissions in the medium and long-term





4. Action plan to reduce emissions

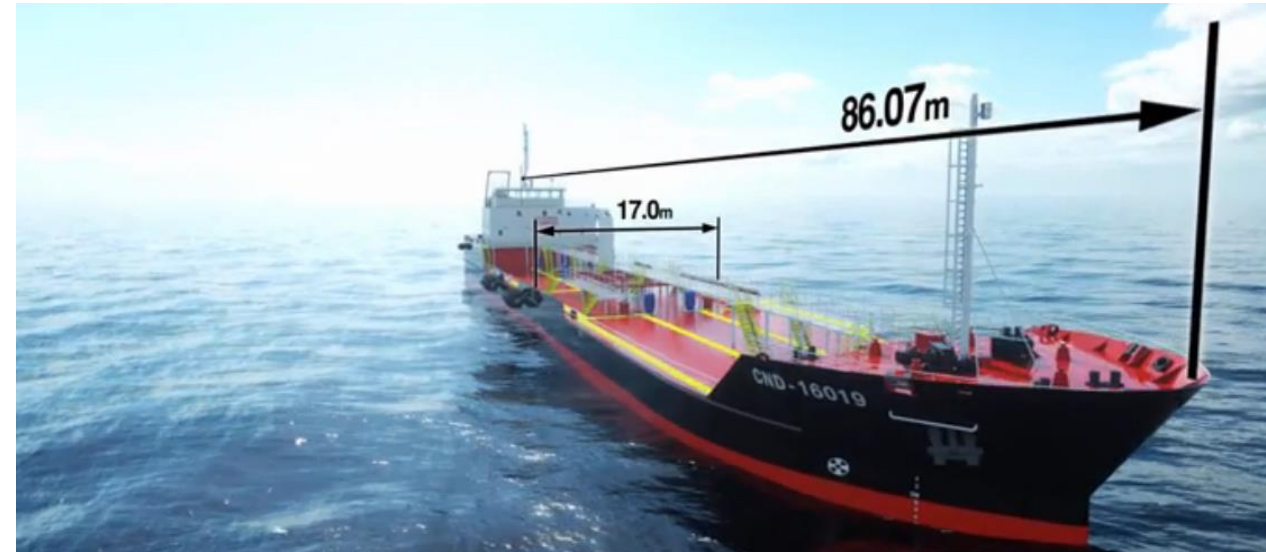
To promote natural gas as an alternative fuel for ships: To have infrastructures to supply LNG to ships

Bunkering: ship to ship



SUARDIAZ: LNG barge of retrofitting ready to supply LNG to vessels.
Capacity: 1.200 m³

European Project CORE LNGas hive
APB + SUARDIAZ + HAM + CEPSA + BV





4. Action plan to reduce emissions

To promote natural gas as an alternative fuel for ships: Pilots and examples of use of LNG as fuel for ships



To incorporate an auxiliary gas engine to BCN – PALMA ferry.

European project CLEANPORT

BALEARIA + GAS NATURAL FENOSA + APB + DGMM + APBAL



Autonomous power supply of auxiliary engine of a Ro-Ro ferry at Port. Electricity is generated by a gas engine on the dock.

European project CORE LNGas hive

SUARDIAZ + GUASCOR + HAM + BV + PORT OF VIGO +
PORT OF TENERIFE





4. Action plan to reduce emissions

To incentivise vessels with a high environmental performance

Currently:

The 5% rebate of the vessels tax takes into account the most world recognized schemes

In the future:

Rethinking ship rebates related to environmental criteria and increase by 40%

ENVIRONMENTAL SHIP
INDEX (2011)



CLEAN SHIPPING INDEX
(2007)



GREEN AWARD (2000)

